

UConn HEALTH

Who We Are 2025

- School of Medicine
- School of Dental Medicine
- The Graduate School (Biomedical Sciences, Public Health, Clinical and Translational Research, Dental Sciences)
- Residency Training (Graduate Medical Education, Graduate Dental Education)
- UConn John Dempsey Hospital
- UConn Medical Group (Outpatient Services)
- UConn Dental Clinics
- Research Laboratories
- Technology Incubation Facilities and Startup Companies

Providing Connecticut with its Physician and Dental Workforce

65% of all practicing dentists in Connecticut were educated and/or trained at UConn School of Dental Medicine

25% of practicing physicians in Connecticut were educated and/or trained at UConn School of Medicine

Serving Connecticut's Marginalized Communities

\$104 Million

in under-reimbursed care for Connecticut residents annually

23%
of outpatient visits are Medicaid patients

52%
of dental clinic visits are Medicaid patients

\$3.65B

Economic Impact to the State
Based on FY23 Data

5800

Full- and Part-time Employees

829

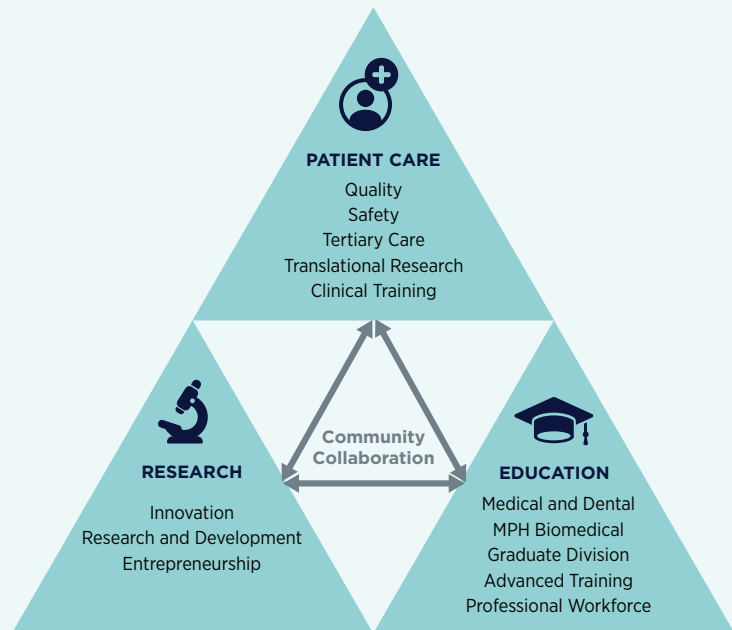
Medical and Dental Residents
placed in central Connecticut hospitals,
addressing a critical workforce need

and attracting **\$175M**
in federal funds annually

\$1.7B

Annual Operating Budget

Integrated Tripartite Mission



22 Patient Care Locations in 11 Towns



UConn HEALTH

**Largest source of
physicians and dentists**
in Connecticut

UConn School of Medicine

461

Students

723

Residents

30%

Increase in class size
since Bioscience
CT's launch in 2011

#33

Ranking for Most
Diverse Medical
Schools (Out of 103)

UConn School of Dental Medicine

206

Students

106

Residents

**5 consecutive
positive or
"perfect"**
accreditation reviews
(since 1994)

**4 consecutive
Top 10**
research ranking
based on NIH
funding

100%

first time pass rate
on national dental
board examination

Increased class
size from
40 to 52
since 2016

**Lowest tuition
and fees** of any
dental school in the
Northeast

**The only
dental school
in CT** and the only
public dental school
in New England

Key Statistics

2025



UConn John Dempsey Hospital

~16,600

Hospital Discharges

~50,000

Emergency Visits

1.02

Medicare Hospital
Spend Per Patient
(CT Average is 1.01)

UConn Medical Group

50%

Increase in patient
encounters since FY20

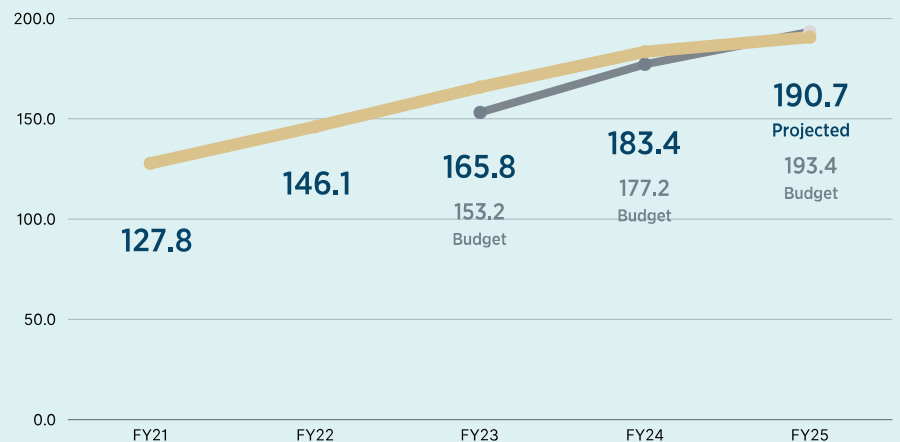
7 of 9

Primary Care
Locations are
Patient-centered
Medical Home
designated



Growing Patient Census

Hospital Average Daily Census



Repeat Awards for Quality, Safety, & Patient Experience



7th consecutive
award



3rd consecutive
award



8th consecutive
award

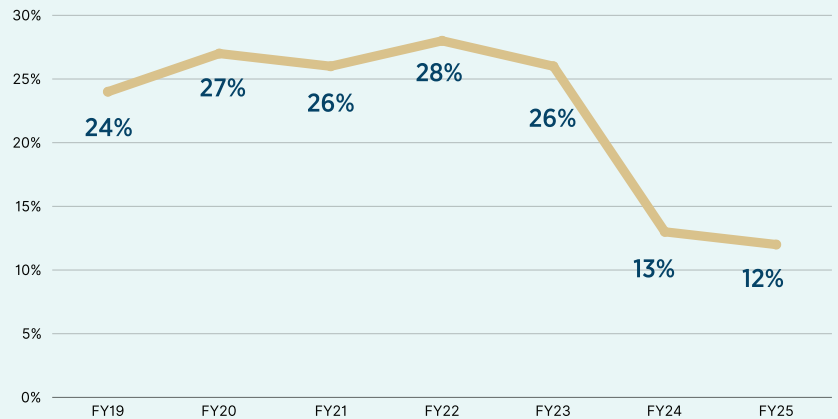


Top 15% in the
nation for patient
experience

View all awards, designations, accreditations, certifications, and accolades at h.uconn.edu/awards

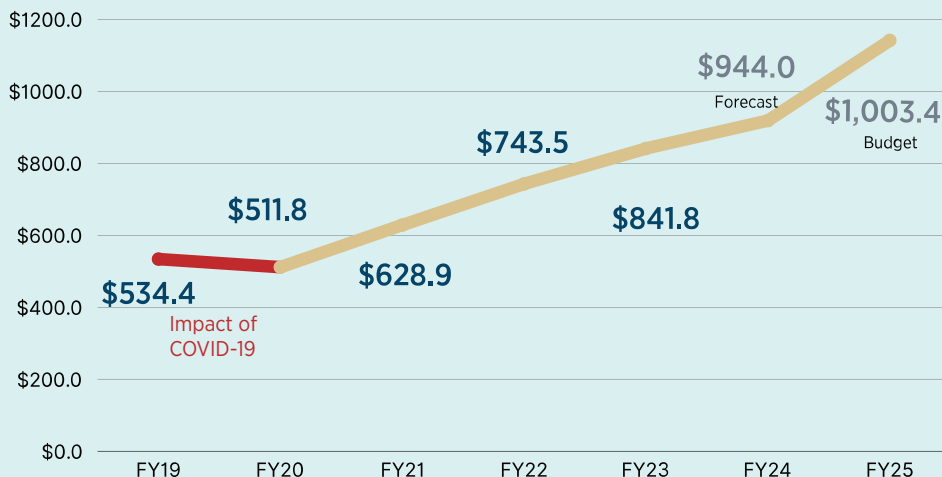


Decreasing Reliance on State Support



Unprecedented Growth in Clinical Revenues

Net patient revenue for JDH, UMG, Dental Clinics and Specialty Pharmacy (in millions)



High-Value Care

UConn John Dempsey's Hospital's

costs to provide care are lower than ~75% of other teaching hospitals

with patients of similar acuity

Economic Impact of UConn Health's Research

1,551 Jobs Supported

\$269 Million in Economic Output

Data from FY2024

FY2025 Budget

(in \$millions)	SOM	SODM	Research	Clinical	Total
Revenues	150.5	24.6	136.3	1,141.9	1,453.3
Expenses	237.7	50.3	163.2	1,202.5	1,653.7
Deficit	(87.2)	(25.7)	(26.9)	(60.6)	
Fund Balance				1.6	
State Support	87.2	25.7	26.9	59.0	198.8